

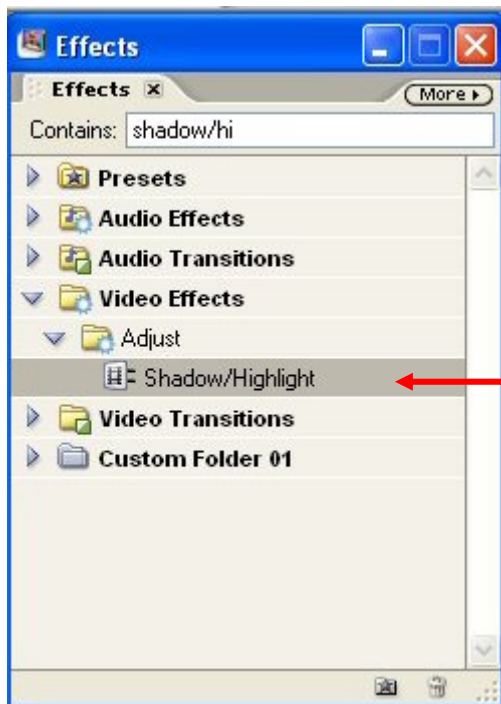
# Adobe Premiere Elements

## Lesson 4: Working with Effects

In Premiere Elements, adding special effects is as simple as dragging and dropping. We'll start with a few basic effects in this video and add more in our next video.

Notice that the last two clips are quite dark and my brother sort of blends into the darkness. Let's lighten these clips up so we can see the offense as well as the defense.

1. Select the second to the last clip (click once on it in the timeline at 00;00;15;00). Then click on **Effects** in the taskbar at the top.
2. In the text box next to the word "Contains," type *Shadow/Highlight*.



Click and drag the icon next to the words Shadow/Highlight onto the second to the last clip.

Repeat (click and drag) for the last clip.

Notice how much brighter this clip is. Jim no longer blends into the darkness.

Ok, let's go Hollywood now and make the beginning of our film a bit more dramatic. Let's fade in from black to begin our first clip.

1. Place your current time indicator at the very beginning of your video.
2. If the Effects window is not open, click on Effects in the taskbar to open the window.
3. In the text box "Contains," type the word "dip."
4. Click and drag the "dip to black" icon to the beginning of the first clip. Play your video to see the effect.